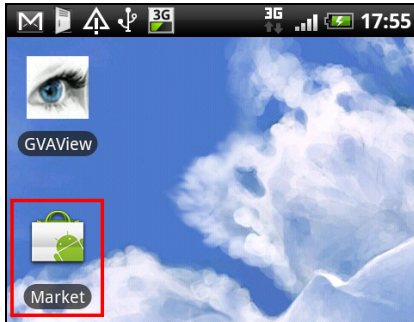




## GV-AView for Android Smartphones & Tablets

You can now access GV-System using Android version 2.2 to 4.1.2 to watch live view or play back recorded videos. Download **GV-AView** from Android Market, and after installing the application, the GV-AView icon will appear on the desktop.



### System Requirements and Specifications

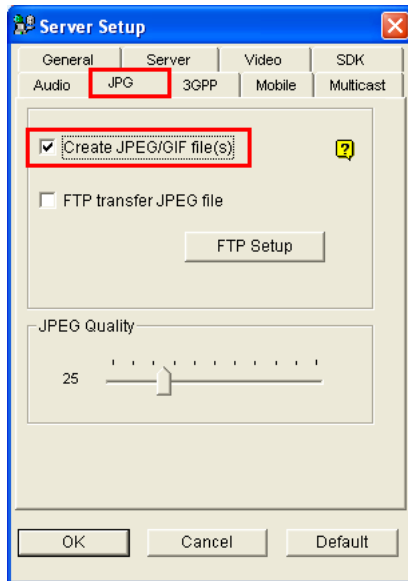
<b>Mobile Application</b>	<b>GV-AView V1.3.1</b>
<b>OS Supported</b>	Android version 2.2 to 4.1.2.
<b>System Supported</b>	GV-System 8.4.0.0 to 8.5.7.0
<b>Port</b>	Data Port: 8866, HTTP Port: 80, RPB Port: 5511
<b>Protocol</b>	TCP/IP
<b>Codec</b>	MJPEG
<b>Resolution Supported</b>	QCIF (176 x 144), CIF (320 x 240), VGA (640 x 480)
<b>Functions</b>	<ul style="list-style-type: none"> <li>● Live View from GV-System</li> <li>● Remote Playback (RPB)</li> <li>● I/O Trigger</li> <li>● PTZ control</li> <li>● Multiple Camera Views</li> <li>● Snapshots</li> </ul>
<b>Note:</b>	
<ol style="list-style-type: none"> <li>1. VGA resolution is only supported when accessing the live view of GV-System V8.5.7.0 or later.</li> <li>2. PTZ control is only supported in GV-PT110D, GV-PTZ010D, GV-IP Speed Dome and COP 15-CD53W (Pelco D).</li> <li>3. Starting from GV-AView V1.2.0, GV-AView no longer supports access to live view on GV-IP Devices.</li> </ol>	



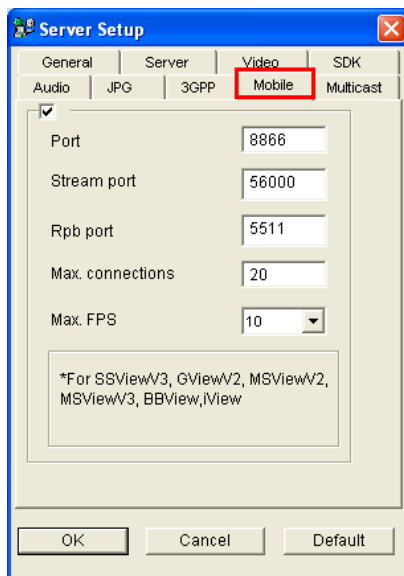
## Allowing Remote Access to GV-System:

To access the GV-System from GV-AView, you need to first activate the JPG settings and the mobile function on the GV-System.

1. In the main system, click the **Network** button and select **Webcam Server**.
2. In the dialog box that appears, click the **JPG** tab and select **Create JPEG/GIF file(s)**.



3. Click the **Mobile** tab and select the checkbox to enable the mobile function.



4. Click **OK** to save the settings.


---

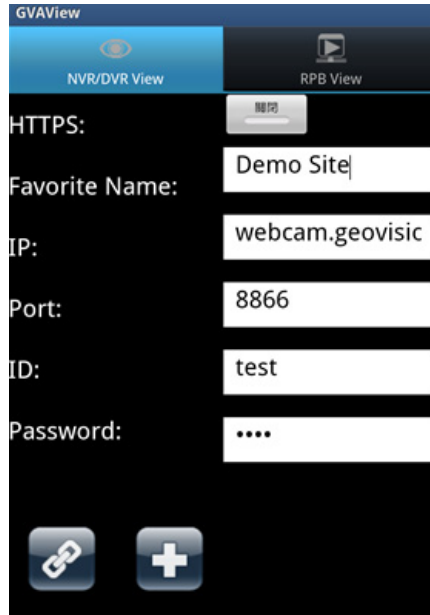
**Note:** If there is a router or firewall installed, ensure these communication ports required by the WebCam server are open: HTTP Port 80, HTTPS Port 443 (if SSL is enabled), Live View Port 8866 and RPB Port 5511.


---



## Connecting to GV-System

1. On your mobile phone, tap the **GV-AView** icon  on the main screen and tap the **NVR/DVR View** tab. This page appears.



2. Type the IP address, port number, user name and password of the GV-System you want to access. And then tap the **Add** button  to save the connection information in the address book.
3. Select **ON** for HTTPS, if SSL is enabled for the WebCam Server. If the default SSL, port of 443, on the WebCam Server is modified, type the new port number at the end of the IP address and use a colon to separate the port number from the IP address for HTTPS connections, e.g., webcam.geovision.com.tw:445.

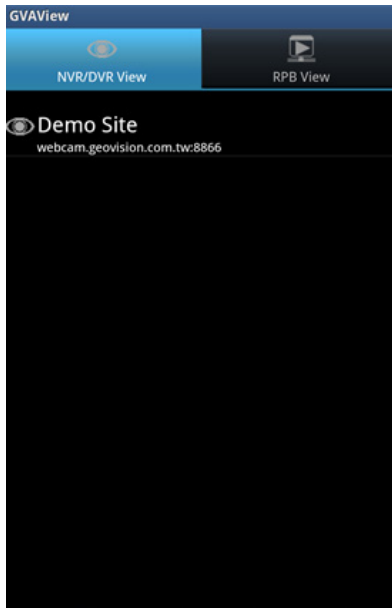
---

**Note:** If the default HTTP port of 80 on the WebCam Server of the GV-System is modified, specify the new port number used for HTTP connection at the end of the IP address, e.g., webcam.geovision.com.tw:81.

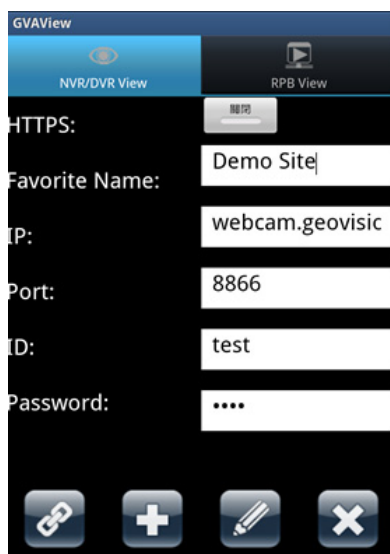
---



4. Tap the created link in the address book.



5. Tap the **Connection** button  to access the GV-System.
















## Accessing Live View


1. Tap the menu button on the mobile phone to see the following options:

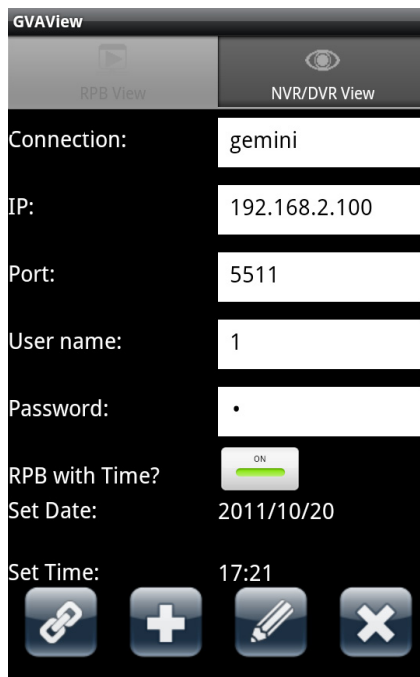



- **I/O Trigger** : Forces I/O devices to be triggered.
  - **Record Event** : Starts or stops recording the current channel or all channels.
  - **Image Setting** : Changes the image quality between **Normal** and **Good**. When Normal is selected, the resolution will be set to QCIF. When Good is selected, the resolution will be CIF or VGA depending on the **Max. Image Size** setting in Webcam Server of GV-System. (**Network > Webcam Server > Video > Max. Image Size**)
4. Double-tap the live view to see it in single view. You can tap the **Snapshot** button  to capture the current image.
  5. If the camera supports PTZ functions, tap the **PTZ** button  and use the touch screen to control the camera. The following control buttons are also available:
    - : Moves the camera toward different directions.
    - : Zooms in and out.
    - : Adjusts the focus.
    - : Moves the camera back to Home position.
    - : Auto focus.
    - : Moves the camera to a preset point by typing the preset number.




## Playing Back Recordings on GV-System

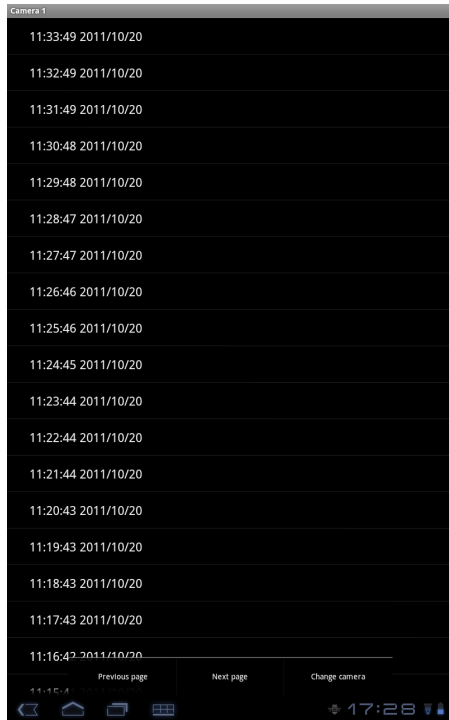
1. On the main page, tap the **RPB View** tab.
2. To add the connection information of a GV-System, tap the menu button and tap the **Add** button .



3. Type the IP address, port number, user name and password of the GV-System you want to access.
4. You can tap the button next to **RPB with Time** and specify a time to see videos recorded after the specified time.
5. On the bottom of the screen, tap the **Add** button  to save the connection information.



6. Tap the **Connect** button  to connect to the GV-System. The videos recorded from camera 1 will be displayed.



7. To play back a recording, tap on the time of the recording.
8. To see more recordings from the same camera, press the menu button and tap **Next Page** to see more recent recordings or tap **Previous Page** to view older recordings.
9. To switch to a different camera, press the menu button, tap **Change Camera** and select a camera.








## Other Functions

### Menu Options in the Address Book

Tap the **NVR/DVR View** tab and then tap the **menu** button. This page appears.



- : **Add** the connection information of a GV-System to the address book.
- : **Delete all** entries in the address book.
- : Displays the **Installation Guide** in two ways—Manual and URL Link.
- : **Exit** the application.
- : **Import or Export** the address book.